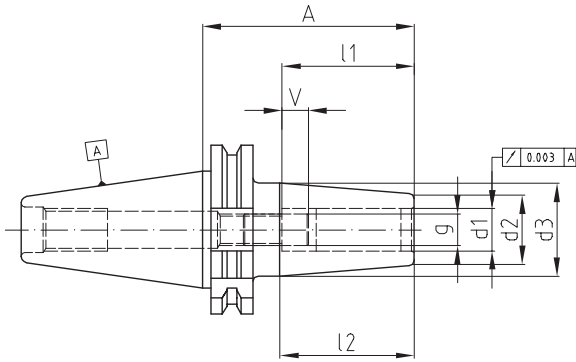


Schrumpffutter SK30 DIN 69871 A – D

ShrinkFit Chucks CAT30

gewuchtet für 20 000 U/min.
balanced for 20 000 r.p.m.



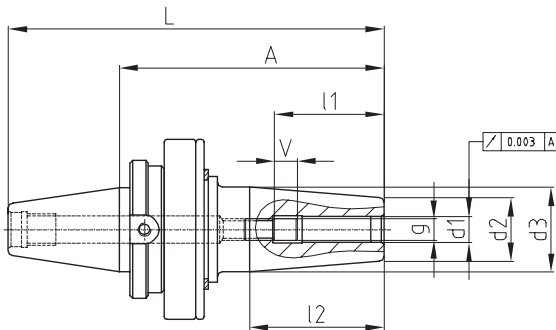
für zentrale Kühlmittelzufuhr
for central coolant through

Bestell-Nr. Order-No.	SK/SA Taper Ø d	d1	d2	d3	l1	l2	A	V	g	HSS
72.050.500.010	30	3	15	20	20	32	80	5	M6	–
72.050.500.040		4	15	20	20	32	80	5	M6	–
72.050.500.070		5	15	20	25	32	80	5	M6	–
72.050.500.100		6	20	27	36	44	80	10	M5	✓
72.050.500.101		6	20	27	36	44	71	10	M5	✓
72.050.500.200		8	20	27	36	44	80	10	M6	✓
72.050.500.201		8	20	27	36	44	71	10	M6	✓
72.050.500.300		10	24	32	42	50	80	10	M8x1	✓
72.050.500.301		10	24	32	42	50	71	10	M8x1	✓
72.050.500.400		12	24	32	47	50	80	10	M10x1	✓
72.050.500.401		12	24	32	47	50	71	10	M10x1	✓
72.050.500.470		14	27	34	47	44	80	10	M10x1	✓
72.050.500.500		16	27	34	50	44	80	10	M12x1	✓
72.050.500.501		16	27	34	50	44	71	10	M12x1	✓
72.050.500.570		18	33	42	50	61	80	10	M12x1	✓
72.050.500.600		20	33	42	52	60	80	10	M16x1	✓

Schrumpffutter SK30 CHIRON ohne Kuppellager und Anzugsbolzen

ShrinkFit Chucks CAT30 Chiron

gewuchtet für 15 000 U/min.
balanced for 15 000 r.p.m.



Bestell-Nr. Order-No.	SK/SA Taper Ø d	d1	d2	d3	l1	l2	A	V	g	HSS
72.320.500.100	30	6	20	27	36	45	100	10	M5	✓
72.320.500.200		8	20	27	36	45	100	10	M6	✓
72.320.500.300		10	24	32	42	51	100	10	M8x1	✓
72.320.500.400		12	24	32	47	51	100	10	M10x1	✓
72.320.500.470		14	27	34	47	50	100	10	M10x1	✓
72.320.500.500		16	27	34	50	50	100	10	M12x1	✓
72.320.500.570		18	33	40	50	45	100	10	M12x1	✓
72.320.500.600		20	33	40	52	45	100	10	M16x1	✓

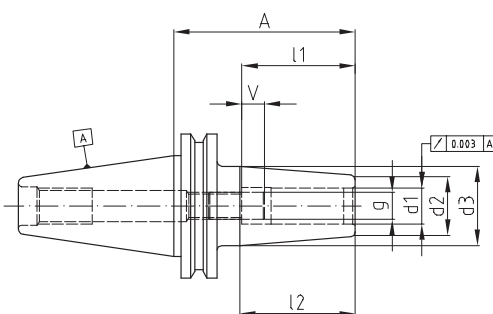
Schrumpffutter SK30 DIN 69871

ShrinkFit Chucks

für Holzbearbeitungsmaschinen ohne Nuten am Bund

for woodworking machines without Drive Keys

gewuchtet für 28 000 U/min.
balanced for 28 000 r.p.m.

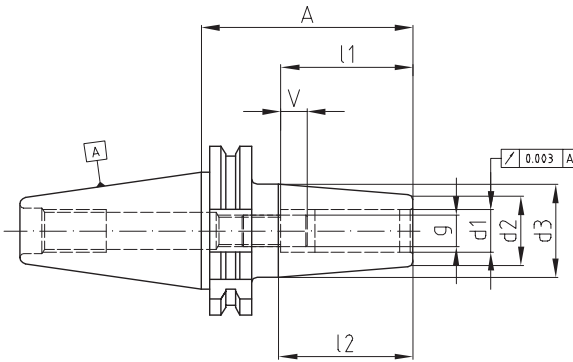


Spezielle Ausführung für die Holzbearbeitung.
Taper without drive keys, for woodworking machines.

Bestell-Nr. Order-No.	SK/SA Taper Ø d	d1	d2	d3	l1	l2	A	V	g	HSS
72.053.500.301	30	10	24	32	42	50	71	10	M8x1	✓
72.053.500.401		12	24	32	47	50	71	10	M10x1	✓
72.053.500.471		14	27	34	50	44	71	10	M10x1	✓
72.053.500.501		16	27	34	50	44	71	10	M12x1	✓
72.053.500.601		20	33	41	52	50	71	10	M16x1	✓
72.053.500.701		25	42	45	58	19	71	10	M16x1	✓

Schrumpffutter SK40 DIN 69871 A – D

gewuchtet für 18 000 U/min.
balanced for 18 000 r.p.m.



für zentrale Kühlmittelzufuhr
for central coolant through

ShrinkFit Chucks CAT40

Bestell-Nr. Order-No.	SK/SA Taper Ø d	d1	d2	d3	l1	l2	A	V	g	HSS
72.060.500.010	40	3	15	20	20	32	80	5	M6	–
72.060.500.040		4	15	20	20	32	80	5	M6	–
72.060.500.070		5	15	20	25	32	80	5	M6	–
72.060.500.100		6	20	27	36	45	80	10	M5	✓
72.060.500.160		6	20	32	36	76	160	10	M5	✓
72.060.500.200		8	20	27	36	45	80	10	M6	✓
72.060.500.260		8	20	32	36	76	160	10	M6	✓
72.060.500.300		10	24	32	42	50	80	10	M8x1	✓
72.060.500.360		10	24	34	42	63	160	10	M8x1	✓
72.060.500.400		12	24	32	47	50	80	10	M10x1	✓
72.060.500.460		12	24	34	47	63	160	10	M10x1	✓
72.060.500.470		14	27	34	47	50	80	10	M10x1	✓
72.060.500.480		14	27	42	47	95	160	10	M10x1	✓
72.060.500.500		16	27	34	50	50	80	10	M12x1	✓
72.060.500.560		16	27	42	50	95	160	10	M12x1	✓
72.060.500.570		18	33	42	50	57	80	10	M12x1	✓
72.060.500.580		18	33	50	50	108	160	10	M12x1	✓
72.060.500.600		20	33	42	52	57	80	10	M16x1	✓
72.060.500.660		20	33	50	52	108	160	10	M16x1	✓
72.060.500.700		25	44	50	58	38	100	10	M16x1	✓
72.060.500.800		32	44	50	62	38	100	10	M16x1	✓

Schrumpffutter SK40 DIN 69871 A – D Verstärkte Ausführung

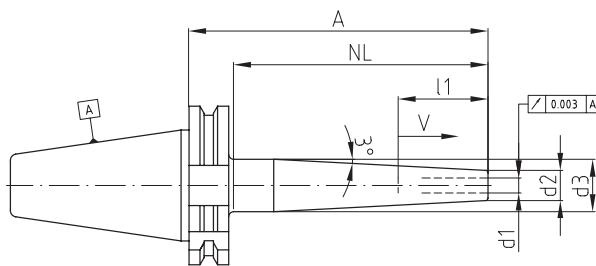
gewuchtet für 18 000 U/min.
balanced for 18 000 r.p.m.

ShrinkFit Chucks CAT40 rein forced version

Bestell-Nr. Order-No.	SK/SA Taper Ø d	d1	d2	d3	l1	l2	A	V	g	HSS
72.060.502.400	40	12	27	34	47	50	80	10	M10x1	–
72.060.502.500		16	33	42	50	50	80	10	M12x1	–
72.060.502.600		20	44	50	52	57	80	10	M16x1	–

Schrumpffutter TSF SK40 DIN 69871 A – D Schlanke Ausführung

gewuchtet für 18 000 U/min.
balanced for 18 000 r.p.m.



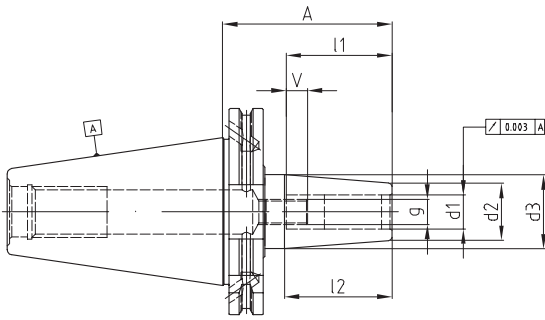
ShrinkFit Chucks TSF CAT40 slim version

Bestell-Nr. Order-No.	SK/SA Taper Ø d	d1	d2	d3	l1	NL	A	V	g	HSS
72.060.501.010	40	3	9	13	20	60	83	5	M6	–
72.060.501.012		3	9	16	20	100	123	5	M6	–
72.060.501.040		4	10	14	20	60	83	5	M6	–
72.060.501.042		4	10	17	20	100	123	5	M6	–
72.060.501.100		6	12	18	36	60	83	5	M5	–
72.060.501.150		6	12	22	36	100	123	5	M5	–
72.060.501.180		6	12	26	36	140	163	5	M5	–
72.060.501.200		8	14	20	36	60	83	5	M6	–
72.060.501.250		8	14	24	36	100	123	5	M6	–
72.060.501.280		8	14	28	36	140	163	5	M6	–
72.060.501.300		10	16	22	42	60	83	5	M8x1	–
72.060.501.350		10	16	26	42	100	123	5	M8x1	–
72.060.501.380		10	16	30	42	140	163	5	M8x1	–
72.060.501.400		12	18	24	47	60	83	5	M10x1	–
72.060.501.450		12	18	28	47	100	123	5	M10x1	–
72.060.501.460		12	18	32	47	140	163	5	M10x1	–
72.060.501.500		16	22	28	50	60	83	5	M12x1	–
72.060.501.550		16	22	32	50	100	123	5	M12x1	–
72.060.501.560		16	22	36	50	140	163	5	M12x1	–
72.060.501.600		20	27	33	52	60	83	5	M16x1	–
72.060.501.650		20	27	37	52	100	123	5	M16x1	–
72.060.501.680		20	27	41	52	140	163	5	M16x1	–

Schrumpffutter SK40 DIN 69871 A-D/B

ShrinkFit Chucks CAT40

gewuchtet für 18 000 U/min.
balanced for 18 000 r.p.m.



Kühlmittel wahlweise über den Werkzeugbund
oder durch die Werkzeugmitte.

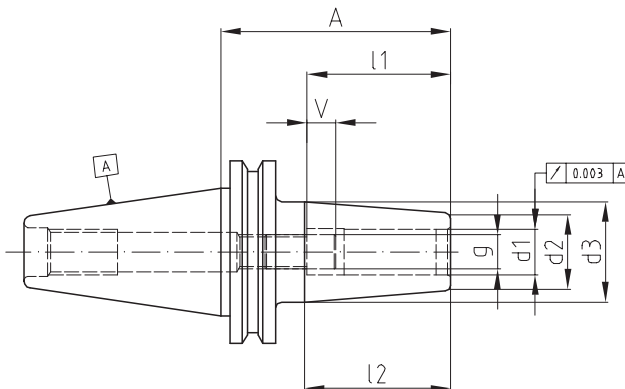
Radial or central coolant through.

Bestell-Nr. Order-No.	SK/SA Taper Ø d	d1	d2	d3	l1	l2	A	V	g	HSS
72.110.500.010	40	3	15	20	20	32	80	5	M6	–
72.110.500.040		4	15	20	20	32	80	5	M6	–
72.110.500.070		5	15	20	25	32	80	5	M6	–
72.110.500.100		6	20	27	36	45	80	10	M5	✓
72.110.500.150		6	20	27	36	45	120	10	M5	✓
72.110.500.200		8	20	27	36	45	80	10	M6	✓
72.110.500.250		8	20	27	36	45	120	10	M6	✓
72.110.500.300		10	24	32	42	50	80	10	M8x1	✓
72.110.500.350		10	24	32	42	50	120	10	M8x1	✓
72.110.500.400		12	24	32	47	50	80	10	M10x1	✓
72.110.500.450		12	24	32	47	50	120	10	M10x1	✓
72.110.500.470		14	27	34	47	50	80	10	M10x1	✓
72.110.500.480		14	27	34	47	50	120	10	M10x1	✓
72.110.500.500		16	27	34	50	50	80	10	M12x1	✓
72.110.500.550		16	27	34	50	50	120	10	M12x1	✓
72.110.500.570		18	33	42	50	57	80	10	M12x1	✓
72.110.500.580		18	33	42	50	57	120	10	M12x1	✓
72.110.500.600		20	33	42	52	57	80	10	M16x1	✓
72.110.500.650		20	33	42	52	57	120	10	M16x1	✓
72.110.500.700		25	44	50	58	60	100	10	M16x1	✓

Schrumpffutter SK40 DIN 69871 für Holzbearbeitungsmaschinen ohne Nuten am Bund

**ShrinkFit Chucks CAT40
for woodworking machines without Drive Keys**

gewuchtet für 28 000 U/min.
balanced for 28 000 r.p.m.



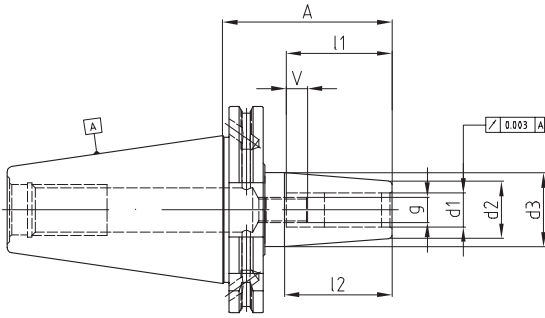
Spezielle Ausführung für die Holzbearbeitung.

Taper without drive keys, for woodworking machines.

Bestell-Nr. Order-No.	SK/SA Taper Ø d	d1	d2	d3	l1	l2	A	V	g	HSS
72.063.500.100	40	6	20	27	36	45	80	10	M5	✓
72.063.500.200		8	20	27	36	45	80	10	M6	✓
72.063.500.300		10	24	32	42	51	80	10	M8x1	✓
72.063.500.400		12	24	32	47	51	80	10	M10x1	✓
72.063.500.470		14	27	34	47	50	80	10	M10x1	✓
72.063.500.500		16	27	34	50	50	80	10	M12x1	✓
72.063.500.600		20	33	40	52	58	80	10	M16x1	✓
72.063.500.700		25	44	50	58	58	80	10	M16x1	✓

Schrumpffutter SK50 DIN 69871 A-D/B

gewuchtet für 12 000 U/min.
balanced for 12 000 r.p.m.



Kühlmittel wahlweise über den Werkzeugbund
oder durch die Werkzeugmitte.

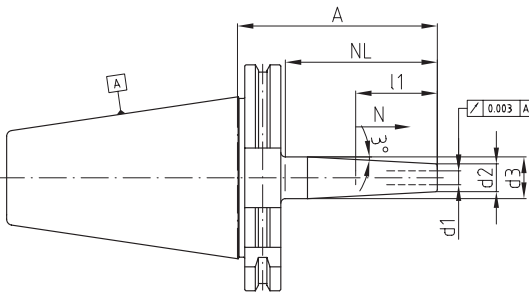
Radial or central coolant through.

ShrinkFit Chucks CAT50

Bestell-Nr. Order-No.	SK/SA Taper Ø d	d1	d2	d3	l1	l2	A	V	g	HSS
72.120.500.100	50	6	20	27	36	45	80	10	M5	✓
72.120.500.102		6	20	27	36	45	120	10	M5	✓
72.120.500.106		6	20	32	36	76	160	10	M5	✓
72.120.500.200		8	20	27	36	45	80	10	M6	✓
72.120.500.202		8	20	27	36	45	120	10	M6	✓
72.120.500.206		8	20	32	36	76	160	10	M6	✓
72.120.500.300		10	24	32	42	50	80	10	M8x1	✓
72.120.500.302		10	24	32	42	50	120	10	M8x1	✓
72.120.500.306		10	24	34	42	64	160	10	M8x1	✓
72.120.500.400		12	24	32	47	50	80	10	M10x1	✓
72.120.500.402		12	24	32	47	50	120	10	M10x1	✓
72.120.500.406		12	24	34	47	64	160	10	M10x1	✓
72.120.500.470		14	27	34	47	50	80	10	M10x1	✓
72.120.500.472		14	27	34	47	50	120	10	M10x1	✓
72.120.500.476		14	27	42	47	95	160	10	M10x1	✓
72.120.500.500		16	27	34	50	50	80	10	M12x1	✓
72.120.500.502		16	27	34	50	50	120	10	M12x1	✓
72.120.500.506		16	27	42	50	95	160	10	M12x1	✓
72.120.500.570		18	33	42	50	57	90	10	M12x1	✓
72.120.500.572		18	33	42	50	57	120	10	M12x1	✓
72.120.500.576		18	33	50	50	108	160	10	M12x1	✓
72.120.500.600		20	33	42	52	57	90	10	M16x1	✓
72.120.500.602		20	33	42	52	57	120	10	M16x1	✓
72.120.500.606		20	33	50	52	108	160	10	M16x1	✓
72.120.500.700		25	44	50	58	63	90	10	M16x1	✓
72.120.500.706		25	44	60	58	102	160	10	M16x1	✓
72.120.500.800		32	44	50	62	63	90	10	M16x1	✓
72.120.500.806		32	44	60	62	102	160	10	M16x1	✓

Schrumpffutter TSF SK50 DIN 69871 A-D Schlanke Ausführung

gewuchtet für 12 000 U/min.
balanced for 12 000 r.p.m.

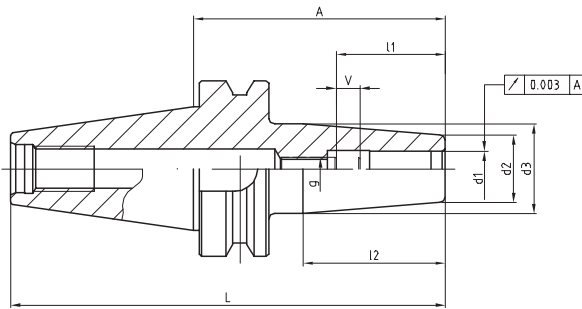


ShrinkFit Chucks TSF CAT50 slim version

Bestell-Nr. Order-No.	SK/SA Taper Ø d	d1	d2	d3	l1	NL	A	V	g	HSS
72.070.501.100	50	6	12	18	36	60	83	5	M5	–
72.070.501.150		6	12	22	36	100	123	5	M5	–
72.070.501.180		6	12	27	36	150	173	5	M5	–
72.070.501.200		8	14	20	36	60	83	5	M6	–
72.070.501.250		8	14	24	36	100	123	5	M6	–
72.070.501.280		8	14	29	36	150	173	5	M6	–
72.070.501.300		10	16	22	42	60	83	5	M8x1	–
72.070.501.350		10	16	26	42	100	123	5	M8x1	–
72.070.501.380		10	16	31	42	150	173	5	M8x1	–
72.070.501.400		12	18	24	47	60	83	5	M10x1	–
72.070.501.450		12	18	28	47	100	123	5	M10x1	–
72.070.501.460		12	18	33	47	150	173	5	M10x1	–
72.070.501.500		16	22	28	50	60	83	5	M12x1	–
72.070.501.550		16	22	32	50	100	123	5	M12x1	–
72.070.501.560		16	22	37	50	150	173	5	M12x1	–
72.070.501.600		20	27	33	52	60	83	5	M16x1	–
72.070.501.650		20	27	37	52	100	123	5	M16x1	–
72.070.501.680		20	27	42	52	150	173	5	M16x1	–
72.070.501.700		25	34	41	58	70	93	5	M16x1	–
72.070.501.750		25	34	44	58	100	123	5	M16x1	–
72.070.501.780		25	34	49	58	150	173	5	M16x1	–

Schrumpffutter BT30

gewuchtet für 18 000 U/min.
balanced for 18 000 r.p.m.

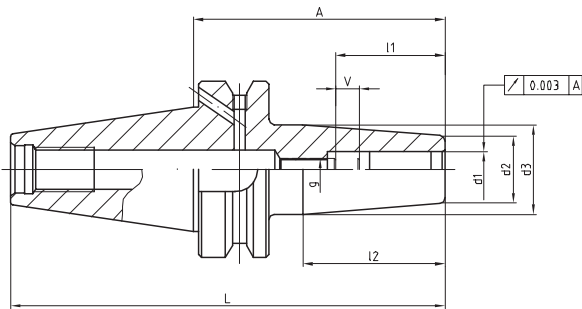


ShrinkFit Chucks BT30

Bestell-Nr. Order-No.	BT Taper Ø d	d1	d2	d3	l1	l2	A	V	g	HSS
72.150.500.010	30	3	15	20	32	30	60	5	M6	–
72.150.500.100		6	20	27	36	45	80	10	M5	✓
72.150.500.200		8	20	27	36	45	80	10	M6	✓
72.150.500.300		10	24	32	42	50	80	10	M8x1	✓
72.150.500.400		12	24	32	47	50	80	10	M10x1	✓
72.150.500.500		16	27	34	50	50	80	10	M12x1	✓
72.150.500.600		20	33	42	52	57	80	10	M16x1	✓

Schrumpffutter BT40

gewuchtet für 18 000 U/min.
balanced for 18 000 r.p.m.



ShrinkFit Chucks BT40

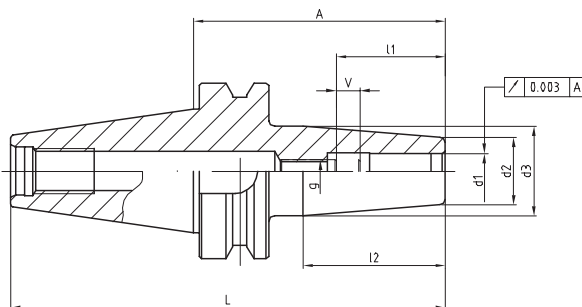
Bestell-Nr. Order-No.	BT Taper Ø d	d1	d2	d3	l1	l2	A	V	g	HSS
72.160.500.010*	40	3	15	20	32		90	5	M6	–
72.160.500.040*		4	15	20	32		90	5	M6	–
72.160.500.050*		5	15	20	32		90	5	M6	–
72.161.500.100		6	20	27	36	45	90	10	M5	✓
72.161.500.200		8	20	27	36	45	90	10	M6	✓
72.161.500.300		10	24	32	42	50	90	10	M8x1	✓
72.161.500.400		12	24	32	47	50	90	10	M10x1	✓
72.161.500.470		14	27	34	47	50	90	10	M10x1	✓
72.161.500.500		16	27	34	50	50	90	10	M12x1	✓
72.161.500.570		18	33	42	50	57	90	10	M12x1	✓
72.161.500.600		20	33	42	52	57	90	10	M16x1	✓
72.161.500.700		25	44	53	58	60	100	10	M16x1	✓

Bei BT40 kann das Kühlmittel wahlweise
über den Werkzeugbund geleitet werden.
BT40 for radial or central coolant through.

* ohne Kühlung über den Bund

Schrumpffutter BT50

gewuchtet für 18 000 U/min.
balanced for 18 000 r.p.m.

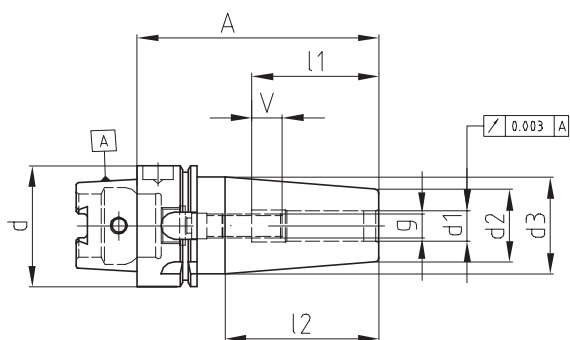


ShrinkFit Chucks BT50

Bestell-Nr. Order-No.	BT Taper Ø d	d1	d2	d3	l1	l2	A	V	g	HSS
72.170.500.100	50	6	20	27	36	44	100	10	M5	✓
72.170.500.200		8	20	27	36	44	100	10	M6	✓
72.170.500.300		10	24	32	42	50	100	10	M8x1	✓
72.170.500.400		12	24	32	47	50	100	10	M10x1	✓
72.170.500.470		14	27	34	47	50	100	10	M10x1	✓
72.170.500.500		16	27	34	50	50	100	10	M12x1	✓
72.170.500.570		18	33	42	50	57	100	10	M12x1	✓
72.170.500.600		20	33	42	52	57	100	10	M16x1	✓
72.170.500.700		25	44	50	58	38	110	10	M16x1	✓
72.170.500.800		32	44	50	62	38	110	10	M16x1	✓

Schrumpffutter HSK Form A DIN 69893

gewuchtet für 24 000 U/min.
balanced for 24 000 r.p.m.

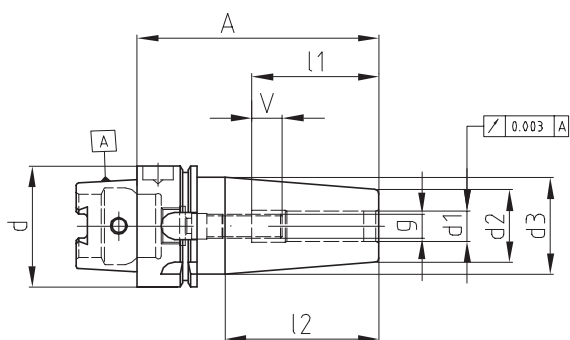


HSK ShrinkFit Chucks

Bestell-Nr. Order-No.	HSK / Taper A / Ø d	d1	d2	d3	l1	l2	A	V	g	HSS
72.560.500.010	32	3	15	20	20	30	65	5	M6	–
72.560.500.040		4	15	20	20	30	65	5	M6	–
72.560.500.070		5	15	20	25	30	65	5	M6	–
72.560.500.100		6	20	26	36	35	75	10	M5	✓
72.560.500.200		8	20	26	36	35	75	10	M6	✓
72.560.500.300		10	24	29	42	40	75	10	M8x1	✓
72.560.500.400		12	24	29	47	40	80	5	M10x1	✓
72.565.500.010	40	3	15	20	20	32	60	5	M6	–
72.565.500.040		4	15	20	20	32	60	5	M6	–
72.565.500.070		5	15	20	25	32	60	5	M6	–
72.565.500.100		6	20	27	36	45	80	10	M5	✓
72.565.500.200		8	20	27	36	45	80	10	M6	✓
72.565.500.300		10	24	32	42	50	80	10	M8x1	✓
72.565.500.400		12	24	32	47	50	90	10	M10x1	✓
72.565.500.470		14	27	34	47	50	90	10	M10x1	✓
72.565.500.500		16	27	34	50	50	90	10	M12x1	✓
72.570.500.010	50	3	15	20	20	32	80	5	M6	–
72.570.500.040		4	15	20	20	32	80	5	M6	–
72.570.500.070		5	15	20	25	32	80	5	M6	–
72.570.500.100		6	20	27	36	45	80	10	M5	✓
72.570.500.200		8	20	27	36	45	80	10	M6	✓
72.570.500.300		10	24	32	42	50	85	10	M8x1	✓
72.570.500.400		12	24	32	47	50	90	10	M10x1	✓
72.570.500.470		14	27	34	47	50	90	10	M10x1	✓
72.570.500.500		16	27	34	50	50	95	10	M12x1	✓
72.570.500.570		18	33	42	50	57	95	10	M12x1	✓
72.570.500.600		20	33	42	52	57	100	10	M16x1	✓

Schrumpffutter HSK63 Form A DIN 69893

gewuchtet für 24 000 U/min.
balanced for 24 000 r.p.m.

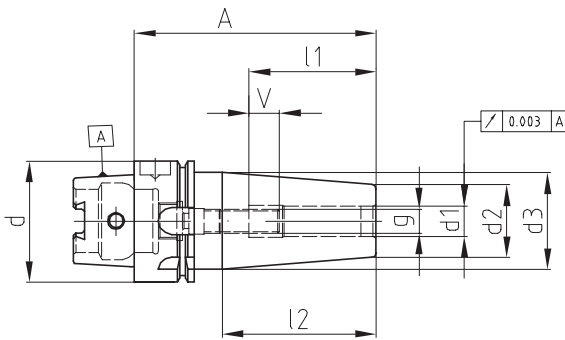


HSK ShrinkFit Chucks

Bestell-Nr. Order-No.	HSK / Taper A / Ø d	d1	d2	d3	l1	l2	A	V	g	HSS
72.575.500.010	63	3	15	20	20	30	90	5	M6	–
72.575.500.040		4	15	20	20	30	90	5	M6	–
72.575.500.070		5	15	25	25	30	90	5	M6	–
72.575.500.100		6	20	27	36	45	90	10	M5	✓
72.575.500.101		6	20	27	36	45	80	10	M5	✓
72.575.500.150		6	20	27	36	45	120	10	M5	✓
72.575.500.180		6	20	32	36	76	160	10	M5	✓
72.575.500.200		8	20	27	36	45	90	10	M6	✓
72.575.500.201		8	20	27	36	45	80	10	M6	✓
72.575.500.250		8	20	27	36	45	120	10	M6	✓
72.575.500.280		8	20	32	36	76	160	10	M6	✓
72.575.500.300		10	24	32	42	50	90	10	M8x1	✓
72.575.500.301		10	24	32	42	50	85	10	M8x1	✓
72.575.500.350		10	24	32	42	50	120	10	M8x1	✓
72.575.500.380		10	24	34	42	63	160	10	M8x1	✓
72.575.500.400		12	24	32	47	50	90	10	M10x1	✓
72.575.500.450		12	24	32	47	50	120	10	M10x1	✓
72.575.500.460		12	24	34	47	63	160	10	M10x1	✓
72.575.500.470		14	27	34	47	50	90	10	M10x1	✓
72.575.500.480		14	27	34	47	50	120	10	M10x1	✓
72.575.500.490		14	27	42	47	95	160	10	M10x1	✓

Schrumpffutter HSK63 Form A DIN 69893

gewuchtet für 24 000 U/min.
balanced for 24 000 r.p.m.



HSK ShrinkFit Chucks

Bestell-Nr. Order-No.	HSK / Taper A / Ø d	d1	d2	d3	l1	l2	A	V	g	HSS
72.575.500.500	63	16	27	34	50	50	95	10	M12x1	✓
72.575.500.550		16	27	34	50	50	120	10	M12x1	✓
72.575.500.560		16	27	42	50	95	160	10	M12x1	✓
72.575.500.570		18	33	42	50	57	95	10	M12x1	✓
72.575.500.580		18	33	42	50	57	120	10	M12x1	✓
72.575.500.590		18	33	51	50	108	160	10	M12x1	✓
72.575.500.600		20	33	42	52	57	100	10	M16x1	✓
72.575.500.650		20	33	42	52	57	120	10	M16x1	✓
72.575.500.680		20	33	51	52	108	160	10	M16x1	✓
72.575.500.700		25	44	53	58	57	115	10	M16x1	✓
72.575.500.780		25	44	53	58	57	160	10	M16x1	✓
72.575.500.800		32	44	53	62	57	120	10	M16x1	✓
72.575.500.880		32	44	53	62	57	160	10	M16x1	✓

Schrumpffutter HSK63 Form A DIN 69893

Verstärkte Ausführung

gewuchtet für 24 000 U/min.
balanced for 24 000 r.p.m.

HSK ShrinkFit Chucks rein forced version

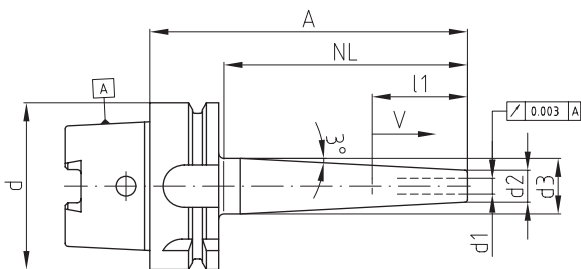
Bestell-Nr. Order-No.	HSK / Taper A / Ø d	d1	d2	d3	l1	l2	A	V	g	HSS
72.575.502.400	63	12	24	32	47	50	90	10	M10x1	-
72.575.502.500		16	27	34	50	50	95	10	M12x1	-
72.575.502.600		20	33	42	52	57	100	10	M16x1	-

Schrumpffutter TSF HSK63 Form A DIN 69893

Schlanke Ausführung

gewuchtet für 24 000 U/min.
balanced for 24 000 r.p.m.

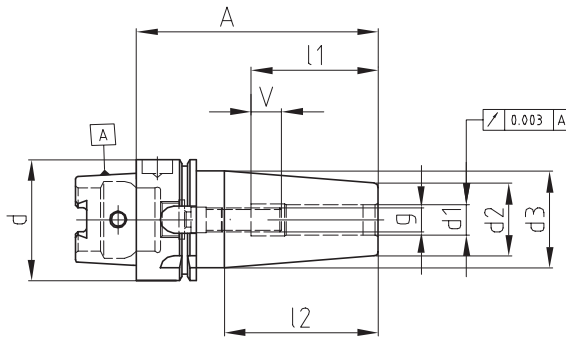
HSK ShrinkFit Chucks TSF slim version



Bestell-Nr. Order-No.	HSK / Taper A / Ø d	d1	d2	d3	l1	NL	A	V	g	HSS
72.575.501.010	63	3	9	13	20	40	70	5	M6	-
72.575.501.012		3	9	16	20	70	100	5	M6	-
72.575.501.015		3	9	19	20	100	130	5	M6	-
72.575.501.040		4	10	14	20	40	70	5	M6	-
72.575.501.042		4	10	17	20	70	100	5	M6	-
72.575.501.045		4	10	20	20	100	130	5	M6	-
72.575.501.100		6	12	18	36	60	90	5	M5	-
72.575.501.150		6	12	21	36	90	120	5	M5	-
72.575.501.180		6	12	24	36	120	150	5	M5	-
72.575.501.185		6	12	27	36	150	180	5	M5	-
72.575.501.200		8	12	20	36	90	60	5	M6	-
72.575.501.250		8	14	23	36	90	120	5	M6	-
72.575.501.280		8	14	26	36	120	150	5	M6	-
72.575.501.285		8	14	29	36	150	180	5	M6	-
72.575.501.300		10	16	22	42	60	90	5	M8x1	-
72.575.501.350		10	16	25	42	90	120	5	M8x1	-
72.575.501.380		10	16	28	42	120	150	5	M8x1	-
72.575.501.385		10	16	31	42	150	180	5	M8x1	-
72.575.501.400		12	18	24	47	60	90	5	M10x1	-
72.575.501.450		12	18	27	47	90	120	5	M10x1	-
72.575.501.460		12	18	30	47	120	150	5	M10x1	-
72.575.501.465		12	18	33	47	150	180	5	M10x1	-
72.575.501.500		16	22	28	50	60	90	5	M12x1	-
72.575.501.550		16	22	31	50	90	120	5	M12x1	-
72.575.501.560		16	22	34	50	120	150	5	M12x1	-
72.575.501.565		16	22	37	50	150	180	5	M12x1	-
72.575.501.600		20	27	34	52	70	100	5	M12x1	-
72.575.501.650		20	27	37	52	100	130	5	M16x1	-
72.575.501.680		20	27	42	52	150	180	5	M16x1	-
72.575.501.700		25	34	41,5	58	75	105	5	M16x1	-
72.575.501.750		25	34	44	58	100	130	5	M16x1	-
72.575.501.780		25	34	47	58	150	180	5	M16x1	-

Schrumpffutter HSK Form A DIN 69893

gewuchtet für 12 000 U/min.
balanced for 12 000 r.p.m.

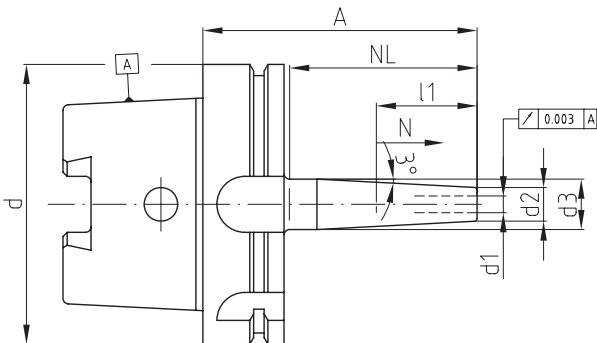


HSK ShrinkFit Chucks

Bestell-Nr. Order-No.	HSK / Taper A / Ø d	d1	d2	d3	l1	l2	A	V	g	HSS
72.580.500.100	80	6	20	27	36	45	85	10	M5	✓
72.580.500.200		8	20	27	36	45	85	10	M6	✓
72.580.500.300		10	24	32	42	50	90	10	M8x1	✓
72.580.500.400		12	24	32	47	50	95	10	M10x1	✓
72.580.500.470		14	27	34	47	50	95	10	M10x1	✓
72.580.500.500		16	27	34	50	57	100	10	M12x1	✓
72.580.500.570		18	33	42	50	57	100	10	M12x1	✓
72.580.500.600		20	33	42	52	57	105	10	M16x1	✓
72.580.500.700		25	44	53	58	63	115	10	M16x1	✓
72.580.500.800		32	44	53	62	63	120	10	M16x1	✓
72.585.500.100	100	6	20	27	36	45	85	10	M5	✓
72.585.500.160		6	20	32	36	76	160	10	M5	✓
72.585.500.200		8	20	27	36	45	85	10	M6	✓
72.585.500.260		8	20	32	36	76	160	10	M6	✓
72.585.500.300		10	24	32	42	50	90	10	M8x1	✓
72.585.500.360		10	24	34	42	63	160	10	M8x1	✓
72.585.500.400		12	24	32	47	50	95	10	M10x1	✓
72.585.500.460		12	24	34	47	63	160	10	M10x1	✓
72.585.500.470		14	27	34	47	50	95	10	M10x1	✓
72.585.500.480		14	27	42	47	95	160	10	M10x1	✓
72.585.500.500		16	27	34	50	57	100	10	M12x1	✓
72.585.500.560		16	27	42	50	95	160	10	M12x1	✓
72.585.500.570		18	33	42	50	57	100	10	M12x1	✓
72.585.500.580		18	33	51	50	114	160	10	M12x1	✓
72.585.500.600		20	33	42	52	57	105	10	M16x1	✓
72.585.500.660		20	33	51	52	114	160	10	M16x1	✓
72.585.500.700		25	44	53	58	63	115	10	M16x1	✓
72.585.500.760		25	44	60	58	102	160	10	M16x1	✓
72.585.500.800		32	44	53	62	63	120	10	M16x1	✓
72.585.500.860		32	44	60	62	102	160	10	M16x1	✓

Schrumpffutter TSF HSK100 Form A DIN 69893 schlanke Ausführung

gewuchtet für 12 000 U/min.
balanced for 12 000 r.p.m.

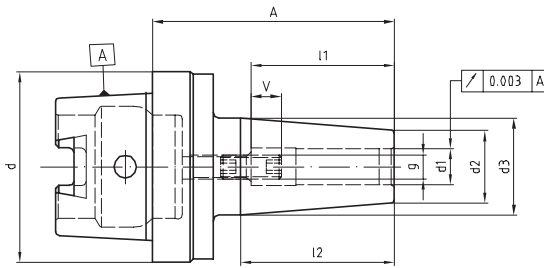


HSK ShrinkFit Chucks TSF slim version

Bestell-Nr. Order-No.	HSK / Taper A / Ø d	d1	d2	d3	l1	NL	A	V	g	HSS
72.585.501.100	100	6	12	18	36	60	98	5	M5	–
72.585.501.150		6	12	22	36	90	138	5	M5	–
72.585.501.180		6	12	27	36	150	188	5	M5	–
72.585.501.200		8	14	20	36	60	98	5	M6	–
72.585.501.250		8	14	24	36	100	138	5	M6	–
72.585.501.280		8	14	29	36	150	188	5	M6	–
72.585.501.300		10	16	22	42	60	98	5	M8x1	–
72.585.501.350		10	16	26	42	100	138	5	M8x1	–
72.585.501.380		10	16	31	42	150	188	5	M8x1	–
72.585.501.400		12	18	24	47	60	98	5	M10x1	–
72.585.501.450		12	18	28	47	100	138	5	M10x1	–
72.585.501.460		12	18	33	47	150	188	5	M10x1	–
72.585.501.500		16	22	28	50	60	98	5	M12x1	–
72.585.501.550		16	22	32	50	100	138	5	M12x1	–
72.585.501.560		16	22	37	50	150	188	5	M12x1	–
72.585.501.600		20	27	34	52	70	105	5	M16x1	–
72.585.501.650		20	27	37	52	100	135	5	M16x1	–
72.585.501.680		20	27	42	52	150	185	5	M16x1	–
72.585.501.700		25	34	40	58	75	108	5	M16x1	–
72.585.501.750		25	34	44	58	100	133	5	M16x1	–
72.585.501.780		25	34	49	58	150	183	5	M16x1	–

Schrumpffutter HSK Form C DIN 69893

gewuchtet für 18 000 U/min.
balanced for 18 000 r.p.m.

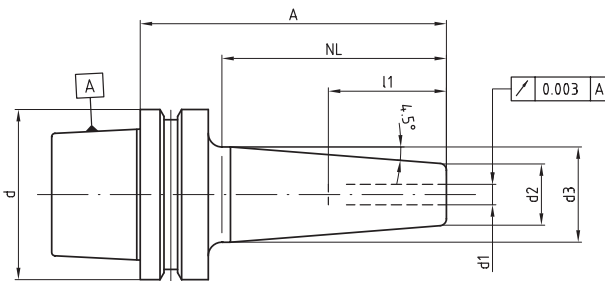


HSK ShrinkFit Chucks

Bestell-Nr. Order-No.	HSK / Taper C / Ø d	d1	d2	d3	l1	l2	A	V	g	HSS
72.561.500.100	32	6	20	27	36	44	75	10	M5	✓
72.561.500.200		8	20	27	36	44	80	10	M6	✓
72.561.500.300		10	24	32	42	50	80	10	M8	✓
72.566.500.100	40	6	20	27	36	44	75	10	M5	✓
72.566.500.200		8	20	27	36	44	80	10	M6	✓
72.566.500.300		10	24	32	42	50	80	10	M8x1	✓
72.566.500.400		12	24	32	47	50	78	10	M10x1	✓
72.566.500.470		14	27	34	47	44	85	10	M10x1	✓
72.566.500.500		16	27	34	50	44	85	10	M12x1	✓
72.571.500.100	50	6	20	27	36	44	70	10	M5	✓
72.571.500.200		8	20	27	36	44	70	10	M6	✓
72.571.500.300		10	24	32	42	50	75	10	M8x1	✓
72.571.500.400		12	24	32	47	50	80	10	M10x1	✓
72.571.500.470		14	27	34	47	44	80	10	M10x1	✓
72.571.500.500		16	27	34	50	44	85	10	M12x1	✓
72.571.500.570		18	33	42	50	61	85	10	M12x1	✓
72.571.500.600		20	33	42	52	61	90	10	M16x1	✓
72.576.500.100	63	6	20	27	36	44	70	10	M5	✓
72.576.500.200		8	20	27	36	44	70	10	M6	✓
72.576.500.300		10	24	32	42	50	75	10	M8x1	✓
72.576.500.400		12	24	32	47	50	80	10	M10x1	✓
72.576.500.470		14	27	34	47	50	80	10	M10x1	✓
72.576.500.500		16	27	34	50	50	85	10	M12x1	✓
72.576.500.570		18	33	42	50	57	85	10	M12x1	✓
72.576.500.600		20	33	42	52	57	90	10	M16x1	✓
72.576.500.700		25	44	50	58	57	100	10	M16x1	✓

Schrumpffutter HSK25 Form E DIN 69893 empfohlenes Schrumpfgerät: MS500 (S. 17)

gewuchtet für 50 000 U/min.
balanced for 50 000 r.p.m.



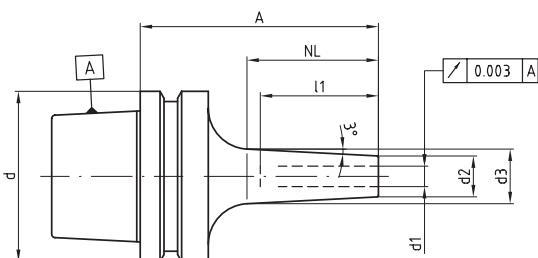
HSK ShrinkFit Chucks

Recommended Shrink Unit: MS500 (p. 17)

Bestell-Nr. Order-No.	HSK / Taper E / Ø d	d1	d2	d3	l1	NL	A	V	g	HSS
72.556.500.013	25	3	9	14	20	32	45	5	M6	-
72.556.500.043		4	10	15	20	32	45	5	M6	-
72.556.500.073		5	11	16	25	32	45	5	M6	-
72.556.500.103		6	15	19	36	26	50	-	-	-
72.556.500.203		8	16	20	36	26	50	-	-	-
72.556.500.303		10	20	20	36	45	55	-	-	-

Schrumpffutter TUS HSK25 Form E DIN 69893 Ultraschlanke Ausführung empfohlenes Schrumpfgerät: MS500 (S. 17)

gewuchtet für 50 000 U/min.
balanced for 50 000 r.p.m.



HSK ShrinkFit Chucks TUS

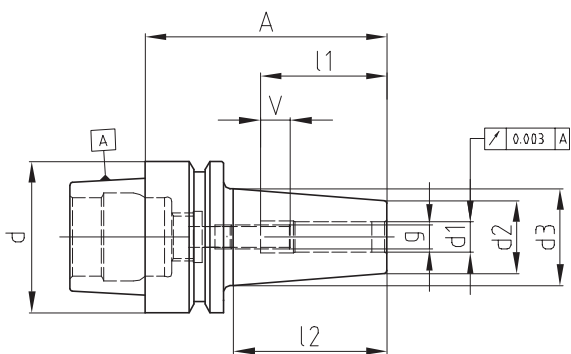
extra slim version

Recommended Shrink Unit: MS500 (p. 17)

Bestell-Nr. Order-No.	HSK / Taper E / Ø d	d1	d2	d3	l1	NL	A	V	g	HSS
72.556.503.010	25	3	6	8	20	19	35	-	-	-
72.556.503.040		4	7	9	20	20	35	-	-	-
72.556.503.100		6	9	11	26	21	35	-	-	-

Schrumpffutter HSK32 Form E DIN 69893

gewuchtet für 30 000 U/min.
balanced for 30 000 r.p.m.

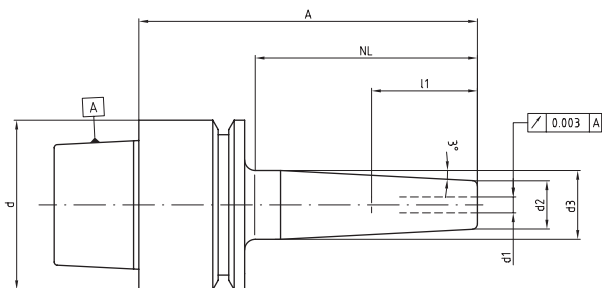


HSK ShrinkFit Chucks

Bestell-Nr. Order-No.	HSK / Taper E / Ø d	d1	d2	d3	l1	NL	A	V	g	HSS
72.563.500.010	32	3	15	20	20	32	60	5	M6	–
72.563.500.040		4	15	20	20	32	60	5	M6	–
72.563.500.070		5	15	20	25	32	60	5	M6	–
72.563.500.100		6	20	26	36	45	70	10	M5	✓
72.563.500.200		8	20	26	36	45	70	10	M6	✓
72.563.500.300		10	24	29	42	35	70	10	M8x1	✓
72.563.500.400		12	24	29	47	35	70	10	M10x1	✓

Schrumpffutter TSF HSK32 Form E DIN 69893 Schlanke Ausführung

gewuchtet für 50 000 U/min.
balanced for 50 000 r.p.m.

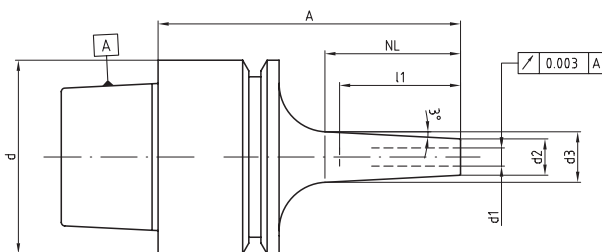


HSK ShrinkFit Chucks TSF slim version

Bestell-Nr. Order-No.	HSK / Taper E / Ø d	d1	d2	d3	l1	NL	A	V	g	HSS
72.563.501.010	32	3	9	13	20	40	64	5	M6	–
72.563.501.012		3	9	16	20	70	94	5	M6	–
72.563.501.040		4	10	14	20	40	64	5	M6	–
72.563.501.042		4	10	17	20	70	94	5	M6	–
72.563.501.100		6	12	17	36	50	74	5	M5	–
72.563.501.150		6	12	20	36	80	104	5	M5	–
72.563.501.200		8	14	19	36	50	74	5	M6	–
72.563.501.250		8	14	22	36	80	104	5	M6	–
72.563.501.300		10	16	21	42	55	78	5	M8x1	–
72.563.501.350		10	16	22	42	80	104	5	M8x1	–

Schrumpffutter TUS HSK32 Form E DIN 69893 Ultraschlanke Ausführung empfohlenes Schrumpfergerät: MS500 (S. 17)

gewuchtet für 50 000 U/min.
balanced for 50 000 r.p.m.



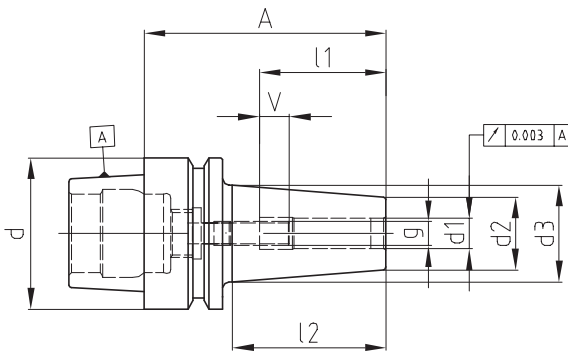
HSK ShrinkFit Chucks TUS extra slim version

Recommended Shrink Unit: MS500 (p. 17)

Bestell-Nr. Order-No.	HSK / Taper E / Ø d	d1	d2	d3	l1	NL	A	V	g	HSS
72.563.503.010	32	3	6	9	20	22	50	–	–	–
72.563.503.040		4	7	10	20	23	50	–	–	–
72.563.503.100		6	9	12	33	24	50	–	–	–

Schrumpffutter HSK40 Form E DIN 69893

gewuchtet für 42 000 U/min.
balanced for 42 000 r.p.m.



Für automatischen Werkzeugwechsel,
zentrale Kühlmittelzufuhr.
For automatic tool change, central coolant through.

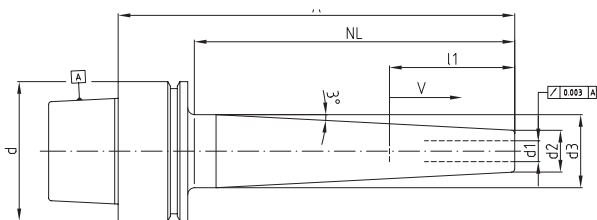
HSK ShrinkFit Chucks

Bestell-Nr. Order-No.	HSK / Taper E / Ø d	d1	d2	d3	l1	l2	A	V	g	HSS
72.568.500.010	40	3	15	20	20	32	60	5	M6	–
72.568.500.012		3	15	20	20	32	80	5	M6	–
72.568.500.015		3	15	20	20	32	120	5	M6	–
72.568.500.040		4	15	20	20	32	60	5	M6	–
72.568.500.042		4	15	20	20	32	80	5	M6	–
72.568.500.045		4	15	20	20	32	120	5	M6	–
72.568.500.070		5	15	20	25	32	60	5	M6	–
72.568.500.072		5	15	20	25	32	80	5	M6	–
72.568.500.075		5	15	20	25	32	120	5	M6	–
72.568.500.100		6	20	27	36	45	80	10	M5	✓
72.568.500.101		6	20	27	36	45	65	–	–	✓
72.568.500.150		6	20	27	36	45	120	10	M5	✓
72.568.500.200		8	20	27	36	45	80	10	M6	✓
72.568.500.201		8	20	27	36	45	65	–	–	✓
72.568.500.240		8	20	27	36	45	120	10	M6	✓
72.568.500.300		10	24	32	42	50	80	10	M8x1	✓
72.568.500.301		10	24	30	42	45	65	–	–	✓
72.568.500.350		10	24	32	42	50	120	10	M8x1	✓
72.568.500.400		12	24	32	47	50	90	10	M10x1	✓
72.568.500.401*		12	24	30	47	45	65	–	–	✓
72.568.500.450		12	24	32	47	50	120	10	M10x1	✓
72.568.500.470		14	27	34	47	50	90	10	M10x1	✓
72.568.500.471*		14	27	34	47	45	65	–	–	✓
72.568.500.480		14	27	34	47	50	120	10	M10x1	✓
72.568.500.500		16	27	34	50	44	90	10	M12x1	✓
72.568.500.501*		16	27	34	50	45	65	–	–	✓
72.568.500.550		16	27	34	44	50	120	10	M12x1	✓

* ohne Kühlrohranschluss

Schrumpffutter TSF HSK40 Form E DIN 69893 Schlanke Ausführung

gewuchtet für 42 000 U/min.
balanced for 42 000 r.p.m.

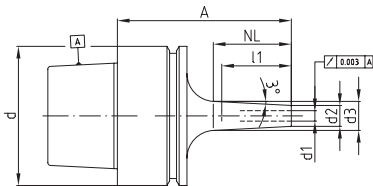


HSK ShrinkFit Chucks TSF slim version

Bestell-Nr. Order-No.	HSK / Taper E / Ø d	d1	d2	d3	l1	NL	A	V	g	HSS
72.568.501.010	40	3	9	13	20	40	64	5	M6	–
72.568.501.011		3	9	12	20	24	50	5	M6	–
72.568.501.012		3	9	16	20	70	94	5	M6	–
72.568.501.040		4	10	14	20	40	64	5	M6	–
72.568.501.041		4	10	13	20	24	50	5	M6	–
72.568.501.042		4	10	17	20	70	94	5	M6	–
72.568.501.100		6	12	18	36	60	84	5	M5	–
72.568.501.101		6	12	16	36	38	60	–	–	–
72.568.501.102		6	12	15	34	24	50	–	–	–
72.568.501.150		6	12	21	36	90	114	5	M5	–
72.568.501.180		6	12	24	36	120	144	5	M5	–
72.568.501.200		8	14	20	36	60	84	5	M6	–
72.568.501.201		8	14	18	36	38	60	–	–	–
72.568.501.250		8	14	23	36	90	114	5	M6	–
72.568.501.280		8	14	26	36	120	144	5	M6	–
72.568.501.300		10	16	22	42	60	84	5	M8x1	–
72.568.501.301		10	16	20	42	38	60	–	–	–
72.568.501.350		10	16	25	42	90	114	5	M8x1	–
72.568.501.380		10	16	28	42	120	144	5	M8x1	–
72.568.501.400		12	18	24	47	60	84	5	M10x1	–
72.568.501.401		12	18	22	42	38	60	–	–	–
72.568.501.450		12	18	27	47	90	114	5	M10x1	–
72.568.501.460		12	18	30	47	120	144	5	M10x1	–

Schrumpffutter TUS HSK40 Form E DIN 69893
Ultraschlanke Ausführung
empfohlenes Schrumpfgerät: MS500 (S. 17)

gewuchtet für 42 000 U/min.
 balanced for 42 000 r.p.m.

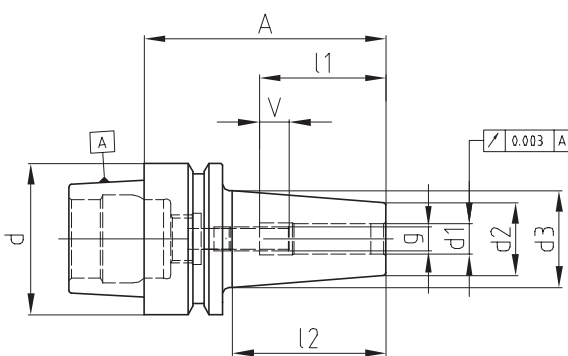


HSK ShrinkFit Chucks TUS
extra slim version
Recommended Shrink Unit: MS500 (p. 17)

Bestell-Nr. Order-No.	HSK / Taper E / Ø d	d1	d2	d3	l1	NL	A	V	g	HSS
72.568.503.010	40	3	6	9	20	22	50	-	-	-
72.568.503.040		4	7	10	20	23	50	-	-	-
72.568.503.100		6	9	12	36	24	50	-	-	-

Schrumpffutter HSK50 Form E DIN 69893

gewuchtet für 35 000 U/min.
 balanced for 35 000 r.p.m.



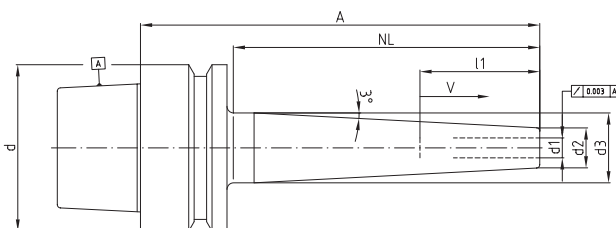
Für automatischen Werkzeugwechsel,
 zentrale Kühlmittelzufuhr.
 For automatic tool change, central coolant through.

HSK ShrinkFit Chucks

Bestell-Nr. Order-No.	HSK / Taper E / Ø d	d1	d2	d3	l1	l2	A	V	g	HSS
72.573.500.010	50	3	15	20	20	30	80	5	M6	-
72.573.500.015		3	15	20	20	30	120	10	M6	-
72.573.500.040		4	15	20	20	30	80	5	M6	-
72.573.500.045		4	15	20	20	30	120	10	M6	-
72.573.500.070		5	15	20	25	30	80	5	M6	-
72.573.500.075		5	15	20	20	30	120	10	M6	-
72.573.500.100		6	20	27	36	45	80	10	M5	✓
72.573.500.150		6	20	27	36	45	120	10	M5	✓
72.573.500.200		8	20	27	36	45	80	10	M6	✓
72.573.500.250		8	20	27	36	45	120	10	M6	✓
72.573.500.300		10	24	32	42	50	85	10	M8x1	✓
72.573.500.350		10	24	32	42	50	120	10	M8x1	✓
72.573.500.400		12	24	32	47	50	90	10	M10x1	✓
72.573.500.450		12	24	32	47	50	120	10	M10x1	✓
72.573.500.470		14	27	34	47	50	90	10	M10x1	✓
72.573.500.500		16	27	34	50	50	95	10	M12x1	✓
72.573.500.550		16	27	34	50	50	120	10	M12x1	✓
72.573.500.570		18	33	42	50	57	95	10	M12x1	✓
72.573.500.600		20	33	42	52	57	100	10	M16x1	✓

Schrumpffutter TSF HSK50 Form E DIN 69893
Schlanke Ausführung

gewuchtet für 35 000 U/min.
 balanced for 35 000 r.p.m.

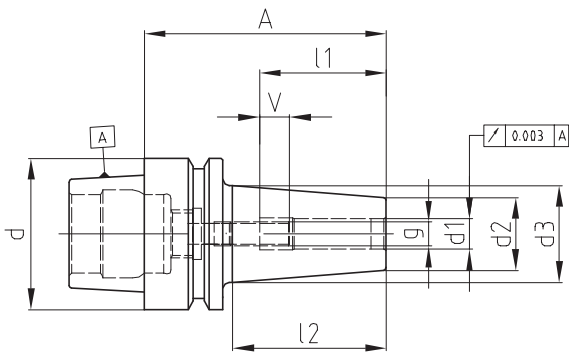


HSK ShrinkFit Chucks TSF
slim version

Bestell-Nr. Order-No.	HSK / Taper E / Ø d	d1	d2	d3	l1	NL	A	V	g	HSS
72.573.501.010	50	3	9	13	20	40	70	5	M6	-
72.573.501.012		3	9	16	20	70	100	5	M6	-
72.573.501.040		4	10	14	20	40	70	5	M6	-
72.573.501.042		4	10	17	20	70	100	5	M6	-
72.573.501.100		6	12	18	36	60	90	5	M5	-
72.573.501.101		6	12	16	36	42	70	5	M5	-
72.573.501.150		6	12	21	36	90	120	5	M5	-
72.573.501.180		6	12	24	36	120	150	5	M5	-
72.573.501.200		8	14	20	36	60	90	5	M6	-
72.573.501.201		8	14	18	36	42	70	5	M6	-
72.573.501.250		8	14	23	36	90	120	5	M6	-
72.573.501.280		8	14	26	36	120	150	5	M6	-
72.573.501.300		10	16	22	42	60	90	5	M8x1	-
72.573.501.301		10	16	20	42	42	70	-	M8x1	-
72.573.501.350		10	16	25	42	90	120	5	M8x1	-
72.573.501.380		10	16	28	42	120	150	5	M8x1	-
72.573.501.400		12	18	24	47	60	90	5	M10x1	-
72.573.501.401		12	18	22	47	42	70	-	M10x1	-
72.573.501.450		12	18	27	47	90	120	5	M10x1	-
72.573.501.460		12	18	30	47	120	150	5	M10x1	-
72.573.501.500		16	22	28	50	60	90	5	M16x1	-
72.573.501.501		16	22	26	47	41	70	-	-	-
72.573.501.550		16	22	31	50	90	120	5	M16x1	-
72.573.501.560		16	22	34	50	120	150	5	M16x1	-

Schrumpffutter HSK63 Form E DIN 69893

gewuchtet für 35 000 U/min.
balanced for 35 000 r.p.m.

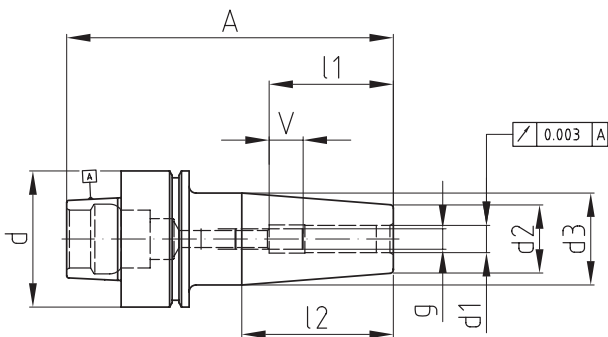


HSK ShrinkFit Chucks

Bestell-Nr. Order-No.	HSK / Taper E / Ø d	d1	d2	d3	l1	l2	A	V	g	HSS
72.578.500.100	63	6	20	27	36	45	90	10	M5	✓
72.578.500.200		8	20	27	36	45	90	10	M6	✓
72.578.500.300		10	24	32	42	50	90	10	M8x1	✓
72.578.500.400		12	24	32	47	50	90	10	M10x1	✓
72.578.500.470		14	27	34	47	50	90	10	M10x1	✓
72.578.500.500		16	27	34	50	50	95	10	M12x1	✓
72.578.500.570		18	33	42	50	57	95	10	M12x1	✓
72.578.500.600		20	33	42	52	57	100	10	M16x1	✓

Schrumpffutter HSK 40 Form F DIN 69893

gewuchtet für 40 000 U/min.
balanced for 40 000 r.p.m.

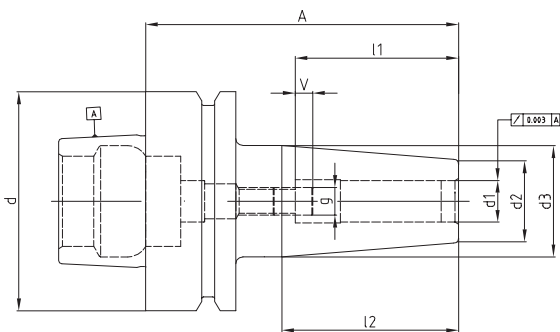


HSK ShrinkFit Chucks

Bestell-Nr. Order-No.	HSK / Taper F / Ø d	d1	d2	d3	l1	l2	A	V	g	HSS
72.569.500.010	40	3	15	20	20	31	60	5	M6	-
72.569.500.040		4	15	20	20	31	60	5	M6	-
72.569.500.070		5	15	20	25	31	60	5	M6	-
72.569.500.100		6	20	27	36	44	80	10	M5	✓
72.569.500.101		6	20	27	36	45	65	5	M5	✓
72.569.500.200		8	20	27	36	44	80	10	M6	✓
72.569.500.201		8	20	27	36	45	65	5	M6	✓
72.569.500.300		10	24	32	42	50	80	10	M8x1	✓
72.569.500.301		10	24	31	42	45	65	5	M8x1	✓
72.569.500.400		12	24	32	47	50	90	10	M10x1	✓
72.569.500.401		12	24	31	42	45	65	5	M10x1	✓
72.569.500.500		16	27	34	50	44	90	10	M12	✓

Schrumpffutter HSK 63 Form F DIN 69893

gewuchtet für 30 000 U/min.
balanced for 30 000 r.p.m.



HSK ShrinkFit Chucks

Bestell-Nr. Order-No.	HSK / Taper F / Ø d	d1	d2	d3	l1	l2	A	V	g	HSS
72.579.500.010	63	3	15	20	20	30	90	5	M6	–
72.579.500.015		3	15	20	20	31	120	5	M6	–
72.579.500.018		3	15	27	20	76	160	5	M6	–
72.579.500.040		4	15	20	20	30	90	5	M6	–
72.579.500.045		4	15	20	20	31	120	5	M6	–
72.579.500.048		4	15	27	20	76	160	5	M6	–
72.579.500.070		5	15	20	25	30	90	5	M6	–
72.579.500.075		5	15	20	25	31	120	5	M6	–
72.579.500.078		5	15	27	25	76	160	5	M6	–
72.579.500.100		6	20	27	36	44	90	10	M5	✓
72.579.500.150		6	20	27	36	44	120	10	M5	✓
72.579.500.180		6	20	32	36	76	160	10	M5	✓
72.579.500.200		8	20	27	36	44	90	10	M6	✓
72.579.500.250		8	20	27	36	44	120	10	M6	✓
72.579.500.280		8	20	32	36	76	160	10	M6	✓
72.579.500.300		10	24	32	42	50	90	10	M8x1	✓
72.579.500.350		10	24	32	42	50	120	10	M8x1	✓
72.579.500.380		10	24	34	42	63	160	10	M8x1	✓
72.579.500.400		12	24	32	47	50	90	10	M10x1	✓
72.579.500.450		12	24	32	47	50	120	10	M10x1	✓
72.579.500.460		12	24	34	47	63	160	10	M10x1	✓
72.579.500.470		14	27	34	47	44	95	10	M10x1	✓
72.579.500.480		14	27	34	47	44	120	10	M10x1	✓
72.579.500.490		14	27	42	47	95	160	10	M10x1	✓
72.579.500.500		16	27	34	50	44	95	10	M12x1	✓
72.579.500.550		16	27	34	50	44	120	10	M12x1	✓
72.579.500.560		16	27	42	50	95	160	10	M12x1	✓
72.579.500.570		18	33	42	50	57	95	10	M12x1	✓
72.579.500.580		18	33	42	50	57	120	10	M12x1	✓
72.579.500.590		18	33	51	50	114	160	10	M12x1	✓
72.579.500.600		20	33	42	52	55	100	10	M12x1	✓
72.579.500.650		20	33	42	52	55	120	10	M12x1	✓
72.579.500.680		20	33	51	52	114	160	10	M16x1	✓
72.579.500.700		25	36	42	58	58	115	10	M16x1	✓

Schrumpffutter HSK 63 Form F DIN 69893

Spezielle Ausführung für die Holzbearbeitung.

HSK63 gewuchtet für 30 000 U/min.
HSK63 balanced for 30 000 r.p.m.

Schrumpffutter chemisch Vernickelt,
ohne Anschlagsschraube.

Special anti-corrosion coating,
without stop screw.

HSK ShrinkFit Chucks

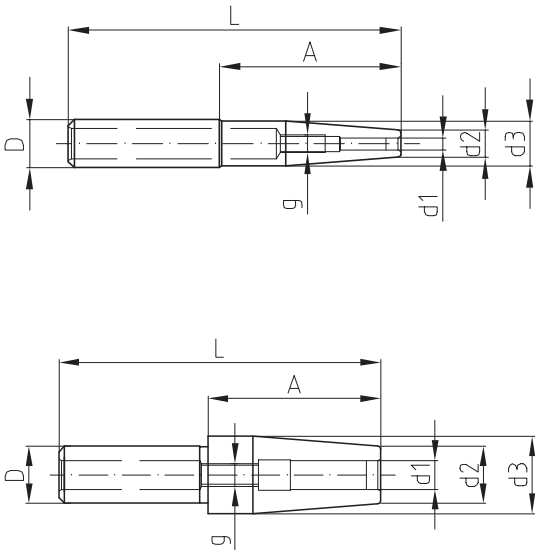
for wood working machines

Bestell-Nr. Order-No.	HSK / Taper F / Ø d	d1	d2	d3	l1	l2	A	V	g	HSS
72.579.500.105	63	6	20	27	30	44	75	–	–	✓
72.579.500.205		8	20	27	40	44	75	–	–	✓
72.579.500.305		10	25	32	40	44	75	–	–	✓
72.579.500.405		12	28	34	47	38	75	–	–	✓
72.579.500.505		16	28	34	50	38	75	–	–	✓
72.579.500.605		20	36	42	50	38	75	–	–	✓
72.579.500.705		25	36	42	50	38	75	–	–	✓

Verwendung: Zum Spannen von HM-Schäften mit Schafttoleranz g6.

Application: For clamping of carbide shanks with shank tolerance g6.

Reduktionen/Verlängerungen:



ShrinkFit Reductions / Extensions

Bestell-Nr. Order-No.	D	d1	d2	d3	A	L	g	HSS
75.500.103	12	3	9	12	60	107	M6	-
75.500.104	4	9	12	60	107	M6	-	-
75.500.105	5	9	12	60	107	M6	-	-
75.500.106	6	15	19	60	107	M5	-	-
75.500.108	8	15	19	60	107	M6	-	-
75.500.203	16	3	9	15	60	110	M6	-
75.500.204	4	9	15	60	110	M6	-	-
75.500.205	5	9	15	60	110	M6	-	-
75.500.206	6	15	19	60	110	M5	-	-
75.500.208	8	15	19	60	110	M6	-	-
75.500.303	20	3	9	15	60	112	M6	-
75.500.304	4	9	15	60	112	M6	-	-
75.500.305	5	9	15	60	112	M6	-	-
75.500.306	6	15	19	60	112	M5	-	-
75.500.308	8	15	19	60	112	M6	-	-
75.500.310	10	20	27	60	112	M8x1	-	-
75.500.312	12	20	27	60	112	M10x1	✓	-
75.500.414	25	14	24	32	60	118	M10x1	-
75.500.416	16	24	32	60	118	M12x1	✓	-

Verwendung: Zum Verlängern und Reduzieren auf kleinere Durchmesser.

Application: Extensions for Shrink Fit Tools, Weldon Holders, Collet Chucks.

Weitere Größen auf Anfrage erhältlich.

Further sizes available on request.

Beispiel für modularen Aufbau

Examples of Modular Tool Combinations

